



Thanks to all of our Workday Volunteers

PPP would like to thank all of the people who volunteered their time and energy on a hot August afternoon, to make improvements to our playground and prepare the classrooms for next year. Eighteen families worked long and hard, including:

- Jeff Abernathy
- Robert Calhoun
- Bryna Callison
- James Clifton
- Suzie Gruber
- Natalia Guitton
- Rohini Gupta
- Tracy & James Hensley
- Lee Johnson
- Sharon & Drew King
- Layla Martinez
- John & Krista Patterson
- Lynne Priestley
- Judy Shin & Tony Yoder
- Omar Sidak
- Susan Thompson
- Sibyl Wesler
- Jeff Wilson

We also received a lot of help from friends of PPP, members of PUUC and 6 members of Sigma Nu, a UNCC fraternity.

- John & Tristan Burns
- Ed Crawford
- Steve Paytner
- Michael Williams
- Eileen Winchester

All of these people helped to spread 9 yards of mulch and 1 ton of sand, double the size of the playground climber, build new fencing

around the play area, re-finish cubbies and water tables, clean the classrooms and more!

A special thanks goes to Hugh Hammond, who designed the playground improvements, worked as foreman and stayed late into the night to assist in building.

Thanks to Wallace Farms on Eastfield Rd for giving PPP a discount on the mulch and to the Home Depot for donating some of the materials.



Play is Powerful

Special points of interest:

- *Thank you Volunteers* 1
- *Ease In* 2
- *Volunteers Needed* 2
- *Fundraisers* 3
- *Sue Riley Scholarship* 3
- *PPP Potluck* 3

Why do we 'Ease In'?

"What is Ease In?" and "Why does it take so long?" are two questions parents often ask at the beginning of each year. Here is some important information to help you understand the importance of Ease In and the benefits it provides to your child and the classroom.

Have you ever started a job where you were expected to jump right into the regular routine without giving you the opportunity to figure out who you were working with, a tour of the facility where you worked and an orientation to give you expectations and schedules? It can be a bit overwhelming for us adults. Now imagine a 2, 3 or 4 year

old jumping feet first into a new situation. At school, the children come to a new environment, encounter new and interesting tools for learning, meet and interact with new adults and lots of new children, and are asked to conform to a new routine.



Our goal is to make this transition into school as smooth and gentle as possible. The reason for Ease In is not

based solely on the individual child but also on the class as a whole. The ideal situation is that, together, the children and teachers experience the routine a little bit at a time, adding on as the routine becomes familiar and the month progresses. This method is successful in helping children learn the transitions they have each day at school without being overwhelmed.

It is sometimes hard to remember that time and simplicity are gifts. We are caught up in a fast paced society, which dictates that we are on the go constantly. We prefer a gentler, slow and steady pace and believe it benefits children.

Volunteers Needed

As you know, PPP is run as a parent cooperative. Each family plays an important role. Our school happens because we make it happen. When you are thinking, "What are they doing about that?", "Wonder when they will fix that?" or "What a great job they are doing here." remember to fill your name in the blank, because we can't do it without the help of everyone.

The goal is to keep jobs small and manageable. There is great



value in even an hour of volunteering here or there.

There are still a few official positions that are needed to help with the overall operation of the school. Please review the sign up sheet and sign up for the position that works best for you and your family.

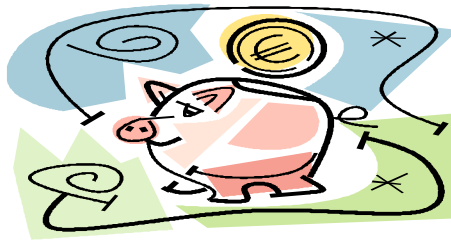
Ongoing Fundraisers

As a non-profit organization we rely on fundraising to generate income for school supplies and improvements to the school and playground.

Several fundraisers require almost no effort on your part and yet help PPP with our goals.

The VIC Card program at Harris Teeter earns us points every time you purchase products from the HT line. All you have to do is link your VIC Card to the school.

Linking your card can be done online, at the store by visiting customer service or PPP can link your card if you provide your VIC card number and name on the sign up sheet located on the bulletin board in the lobby. Our school code is 4841. Family and friends can link there cards too!



In addition, PPP collects labels from Campbell soup and related products. Simply remove the label and place in the designated collection envelope located on the PPP bulletin board.

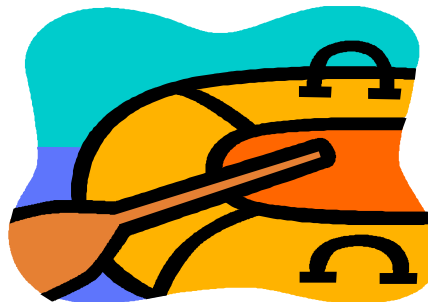
PPP also collects used toner cartridges and cell phones. These items are recycled and earn us money. Collection boxes will be marked and in the lobby.

Don't forget to tell friends and family about these fundraisers, every little bit makes a huge difference to our school.

Sue Riley Scholarship

PPP is pleased to offer families who may otherwise not be able to afford the tuition, the Sue Riley Memorial Scholarship.

The scholarship was created to honor the memory of Sue Riley, a highly respected early childhood educator, who offered her wisdom and



guidance during the creation of PPP and who died this past spring.

The scholarship will assist families who are unable to afford tuition

Families interested in applying should fill out an application and return it by September 30, 2006.

PPP Potluck

Mark your calendars for the PPP Potluck lunch, scheduled for Saturday, October 14, 2006 from 11:00-2:00.

The Potluck will be held at the preschool. Please bring your fa-

vorite dish to share and include copies of the recipe too! We have all discovered some delicious recipes and may even include some recipes in future issues of the newsletter.

No nuts please.





Organization

BROUGHT TO YOU BY THE PPP
COUNCIL

Organization Address
Your Address Line 2
Your Address Line 3
Your Address Line 4

Phone: 555-555-5555
Fax: 555-555-5555
E-mail: someone@example.com

Your organization tag line here.

This would be a good place to insert a short paragraph about your organization. It might include the purpose of the organization, its mission, founding date, and a brief history. You could also include a brief list of the types of products, services, or programs your organization offers, the geographic area covered (for example, western U.S. or European markets), and a profile of the types of customers or members served.

It would also be useful to include a contact name for readers who want more information about the organization.

We're on the Web!
example.microsoft.com

Back Page Story Headline

This story can fit 175-225 words.

If your newsletter is folded and mailed, this story will appear on the back. So, it's a good idea to make it easy to read at a glance.

A question and answer session is a good way to quickly capture the attention of readers. You can either compile questions that you've received since the last edition or you can summarize some generic questions that are frequently asked about your organization.

A listing of names and titles of managers in your organization is a good way to give your newsletter a personal touch. If your organization is small, you may want to list the names of all employees.

If you have any prices of standard products or services, you can include a listing of those here. You may want to refer your readers to

any other forms of communication that you've created for your organization.

You can also use this space to remind readers to mark their calendars for a regular event, such as a breakfast meeting for vendors every third Tuesday of the

month, or a biannual charity auction.

If space is available, this is a good place to insert a clip art image or some other graphic.



Caption describing picture or graphic.